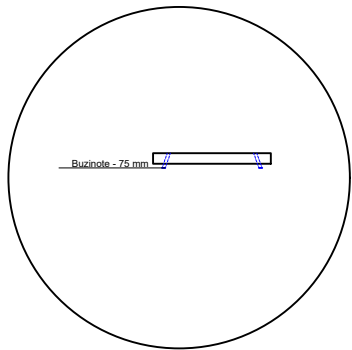
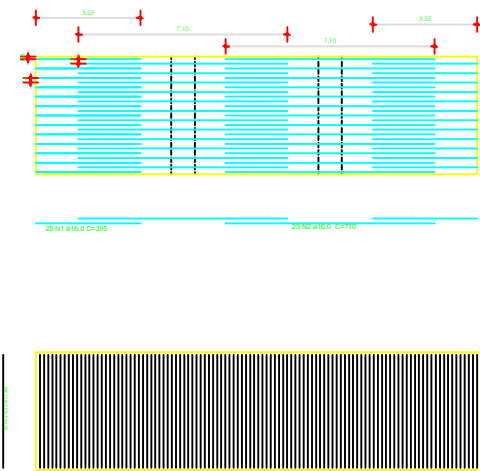


# DETALHE LAJE (15,00X4,00)

FERRAGEM POSITIVA (INFERIOR DA LAJE)



Relação do aço

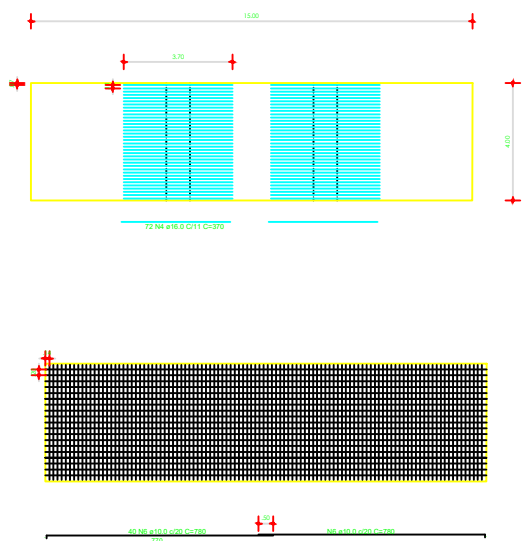
POSITIVO						
AÇO	N	DIAM (mm)	QUANT	C UNIT (m)	C TOTAL (m)	PESO (kg)
CA50	1	16.0	25	3.55	88.75	88.75
	2	16.0	25	7.10	177.50	177.50
	3	10.0	107	3.94	421.58	421.58

NEGATIVO						
AÇO	N	DIAM (mm)	QUANT	C UNIT (m)	C TOTAL (m)	PESO (kg)
CA50	4	16.0	72	3.70	266.40	266.40
	5	10.0	107	4.10	438.70	438.70
	6	10.0	40	7.80	312.00	312.00

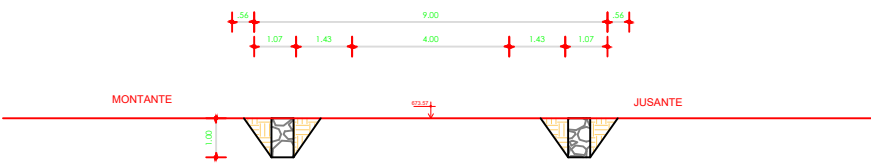
Resumo do aço				
AÇO	DIAM (mm)	C TOTAL (m)	PESO (kg)	
CA50	16.0	1163.58	1163.58	
CA50	10.0	932.65	932.65	
PESO TOTAL (kg)				2096.23
CA50				1587.22

NOTA: Concreto adotado: 25 MPa

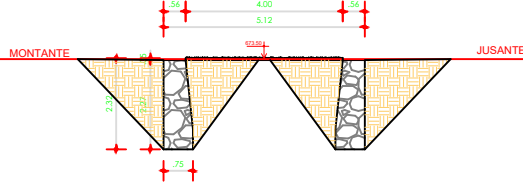
FERRAGEM NEGATIVA (SUPERIOR DA LAJE)



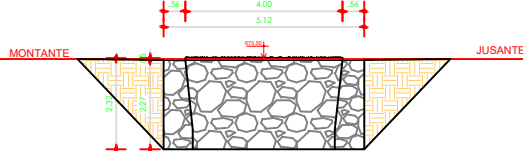
SEÇÃO - 01D



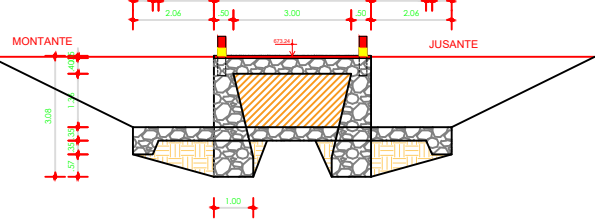
SEÇÃO - 02E



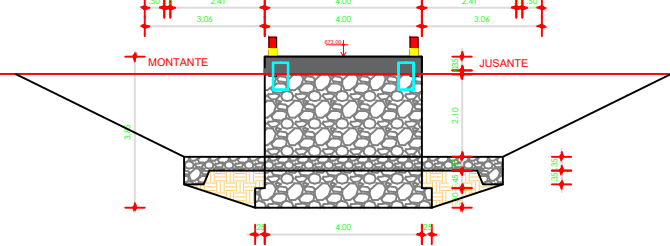
SEÇÃO - 02D



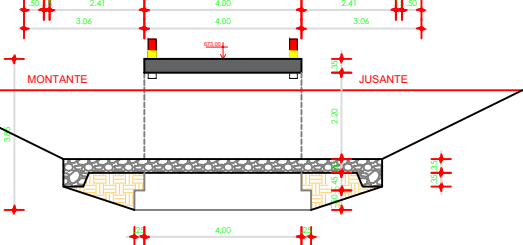
SEÇÃO - 03E=03D



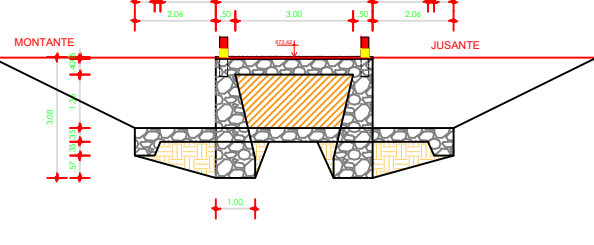
SEÇÃO - 04E=04D



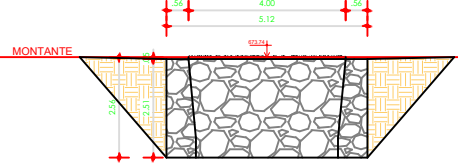
SEÇÃO - 05E=05D



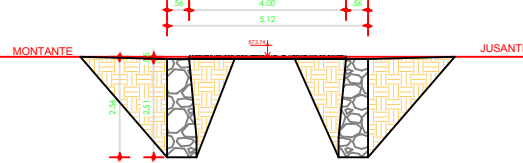
SEÇÃO - 06E=06D



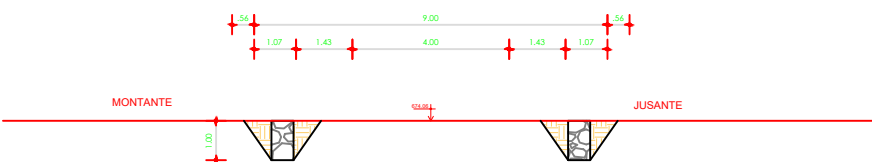
SEÇÃO - 07E



SEÇÃO - 07D



SEÇÃO - 08E



## PROJETO ESPECÍFICO PASSAGEM MOLHADA - BARRA

### PROJETO DE IMPLANTAÇÃO

PLANTA:  
SEÇÕES TRANSVERSAIS

PROJETO - AUTORIA:  
FRANCISCO GILVAM JARDIM  
CREA/PE: 12085

VERSÃO REVISADA EM:

DESENHO:  
GISLANE MENDES

ESCALA:  
INDICADA

CICLOPE:  
0000

DATA:  
JANEIRO/2026

NÚMERO:  
IMP.  
02/02  
MUNICÍPIO:  
BOQUIRA